

76 & 114 LCM Telescopes

ENGLISH



76LCM
#31151
114LCM
#31150

114LCM

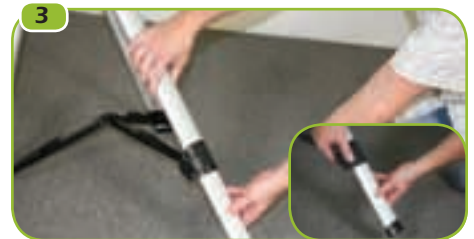
Quick Set-up Guide



1 Your LCM 76/114 telescope includes: optical tube with StarPointer finderscope attached, motorized base, tripod, accessory tray, two eyepieces (9 mm & 25 mm), computerized hand control, TheSkyX CD, and owner's manual



2 Assemble tripod by spreading the legs out until the center leg brace is fully extended.



3 Extend tripod legs 6 to 8 inches by lifting the tripod leg locking lever and pulling the leg to desired length and snapping down the lever.



4 Place accessory tray on top of center leg brace by lining up the grooves on the tray to the post on the brace.



5 Once grooves are aligned, turn accessory tray until it snaps into clips on each leg brace.



6 Place the motorized base on top of the tripod making sure that the three round feet rest on the round flat pads on the inside of the tripod head.



7 Thread the coupling screw into the hole at the bottom of the motorized base. Tighten screw to secure the base to the tripod.



8 Loosen the altitude lock and rotate the tube clamp so that the locking screw is positioned on the top of the base. Then tighten the altitude lock by hand, but don't over tighten.



9 Slide the optical tube dovetail into the fork arm as shown.



76 & 114 LCM Telescopes

Quick Set-up Guide



Secure the tube to the base by tightening the locking screw on the top of the base.



Select the low power (25 mm) eyepiece and insert it as shown above.



Tighten silver screw to secure.



Attach plastic hand control holder to the tripod leg.



Slide Computerized Hand Control into the hand control holder as shown above.



Plug Computerized Hand Control into the "Hand Control" port on the fork arm.



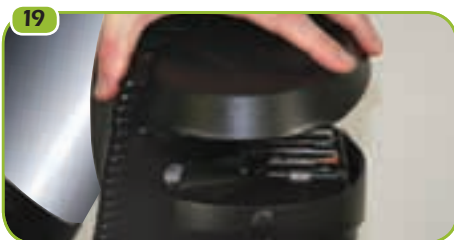
Press the tab on the front of the battery compartment and remove the cover.



Gently remove the battery holder from inside the battery compartment.



Place 8-AA batteries (user supplied) inside the battery holder.



Return the battery holder back inside the base and replace the cover.



Before you begin viewing, please remember to remove tube lens cap.



While observing, tube should be positioned as shown above.

Before you can begin observing, you must setup your hand control, align your finderscope and align your telescope. Step by step instructions are included in the following Hand Control Setup section.